

State of Wyoming Corner Record

(In compliance with the **CORNER PERPETUATION AND FIELD ACT**, Wyoming Statutes, 1977 Section 36-11-101, et. seq., and the Rules and Regulations of the Board of Professional Engineers and Professional Land Surveyors)

Reverse side of this form may be used if more space is needed.

Record of original survey and citation of source of historical information (if corner is lost or obliterated). Description of corner monumentation evidence found and/or monument and accessories established to perpetuate the location of this corner. Sketch of relative location of monument, accessories, and reference points with course and distance to adjacent corner(s) (if determined in this survey). Method and rationale for reestablishment of lost or obliterated corner.

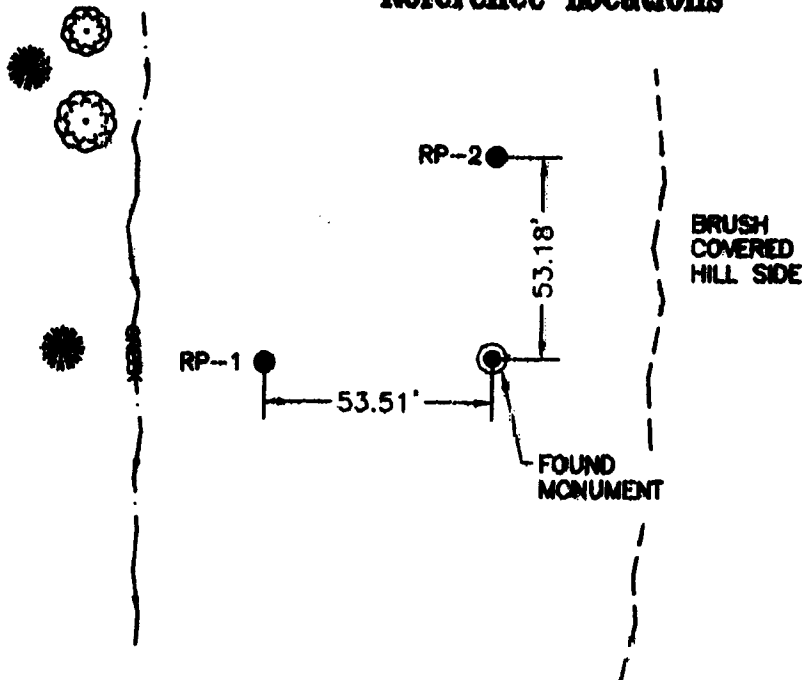
FOUND: 3" BRASS CAP ON IRON PIPE, SURROUNDED BY ROCK COLLAR APPROPRIATELY STAMPED SEE MONUMENT INSCRIPTION

GLO RECORD: SET AN IRON POST, 3 FT. LONG, 1 IN. DIAM., 27 INS. IN THE GROUND, FOR CENTER 1/4 SEC. COR. OF SEC. 26, WITH BRASS CAP.

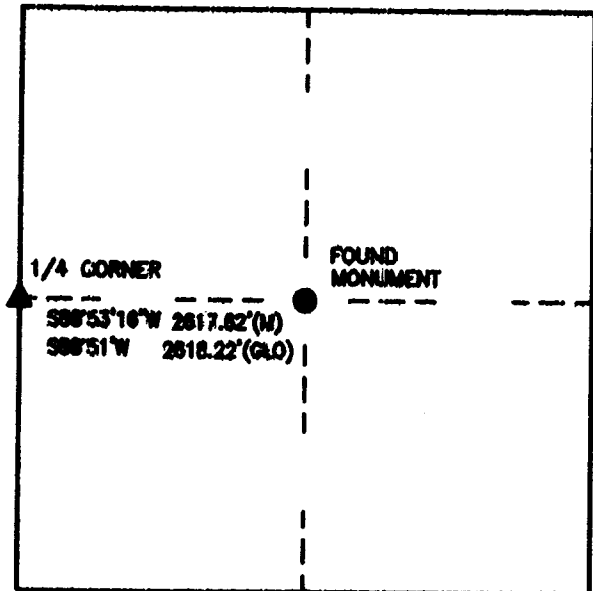
SET: NOTHING

REFERENCES: 2-5/8" X 24" REBAR WITH 1 1/2" ALUMINUM CAP STAMPED RP-1, RP-2, PLS 566

Reference Locations



Monument Location



Monument Inscription



Date of Field Work: 8/16/99

Office Reference: 8174

Cross Index Plat

	1	2	3	4	5	6	7	8	9	10	11	12	13	14	15	16	17	18	19	20	21	22	23	24	25
A																									
B		6	5	4	3	2	1																		
C																									
D																									
E																									
F																									
G																									
H																									
I																									
J																									
K																									
L																									
M																									
N																									
O																									
P																									
Q																									
R																									
S																									
T																									
U																									
V																									
W																									
X																									
Y																									
Z																									

Firm/Agency, Address

INTERMOUNTAIN PROFESSIONAL SERVICES
5801 OSAGE AVENUE
CHEYENNE, WYOMING 82009
Ph: (307) 632-3138
Fax: (307) 632-3194

This corner record was prepared by me or under my direction and supervision.

SEAL & SIGNATURE



RECORDED 3/31/2000 AT 10:52 AM REC# 271396 BK# 1550 PG# 639
DEBRA K. LATHROP, CLERK OF LARAMIE COUNTY, WY PAGE 1 OF 1

Corner Name CENTER 1/4 Section 26, T 15 N, R 70 W, 6th P.M.
County: LARAMIE Wyoming

Cross-Index No.: 1-19